

PLAN 53R-15832

DESIGNED AND DRAWN BY
 DATE: 1996-11-19
 PLAN PREPARED FOR THE SURVEYOR
 BY: U.S. DORLAND LIMITED
 1: ORIGINAL THIS PLAN IS IN REFERENCE TO THE
 PLAN NUMBER AND DATE

- PART 1 - CONVEYANCE BY PARCEL 1880 S.W.S.
- PART 2 - ALL OF PARCEL 1880 S.W.S.
- PART 3 - ALL OF PARCEL 1880 S.W.S.
- PART 4 - ALL OF PARCEL 1880 S.W.S.
- PARCELS 5 TO 25 INCLUSIVE - REMAINDER OF PARCEL 1880 S.W.S.
- PARCELS 26 TO 30 - ALL OF PARCEL 1880 S.W.S.
- PARCELS 31 AND 32 - SUBJECT TO EASEMENT BY EASEMENT
- PARCELS 33 AND 34 - SUBJECT TO EASEMENT BY EASEMENT
- PARCELS 35 AND 36 - SUBJECT TO EASEMENT BY EASEMENT

**PLAN OF SURVEY OF
 PART OF LOT 3
 CONCESSION 5
 TOWNSHIP OF WATERS
 TOWN OF WALDEN
 REGIONAL MUNICIPALITY OF SUDBURY
 DISTRICT OF SUDBURY
 SCALE = 1 INCH = 100 FEET
 D. S. DORLAND LIMITED
 ONTARIO LAND SURVEYORS
 1995**

NOTE
 ALL DISTANCES SHOWN HEREON ARE APPROXIMATE AND ALL
 DISTANCES TO PARTS OF THE LOT SHOWN ON THIS PLAN
 ARE TO BE TAKEN AS SHOWN BY A SURVEYOR

- LEGEND**
- 01 - SURVEYOR'S OFFICE
 - 02 - SURVEYOR'S OFFICE
 - 03 - SURVEYOR'S OFFICE
 - 04 - SURVEYOR'S OFFICE
 - 05 - SURVEYOR'S OFFICE
 - 06 - SURVEYOR'S OFFICE
 - 07 - SURVEYOR'S OFFICE
 - 08 - SURVEYOR'S OFFICE
 - 09 - SURVEYOR'S OFFICE
 - 10 - SURVEYOR'S OFFICE
 - 11 - SURVEYOR'S OFFICE
 - 12 - SURVEYOR'S OFFICE
 - 13 - SURVEYOR'S OFFICE
 - 14 - SURVEYOR'S OFFICE
 - 15 - SURVEYOR'S OFFICE
 - 16 - SURVEYOR'S OFFICE
 - 17 - SURVEYOR'S OFFICE
 - 18 - SURVEYOR'S OFFICE
 - 19 - SURVEYOR'S OFFICE
 - 20 - SURVEYOR'S OFFICE
 - 21 - SURVEYOR'S OFFICE
 - 22 - SURVEYOR'S OFFICE
 - 23 - SURVEYOR'S OFFICE
 - 24 - SURVEYOR'S OFFICE
 - 25 - SURVEYOR'S OFFICE
 - 26 - SURVEYOR'S OFFICE
 - 27 - SURVEYOR'S OFFICE
 - 28 - SURVEYOR'S OFFICE
 - 29 - SURVEYOR'S OFFICE
 - 30 - SURVEYOR'S OFFICE
 - 31 - SURVEYOR'S OFFICE
 - 32 - SURVEYOR'S OFFICE
 - 33 - SURVEYOR'S OFFICE
 - 34 - SURVEYOR'S OFFICE
 - 35 - SURVEYOR'S OFFICE
 - 36 - SURVEYOR'S OFFICE
 - 37 - SURVEYOR'S OFFICE
 - 38 - SURVEYOR'S OFFICE
 - 39 - SURVEYOR'S OFFICE
 - 40 - SURVEYOR'S OFFICE
 - 41 - SURVEYOR'S OFFICE
 - 42 - SURVEYOR'S OFFICE
 - 43 - SURVEYOR'S OFFICE
 - 44 - SURVEYOR'S OFFICE
 - 45 - SURVEYOR'S OFFICE
 - 46 - SURVEYOR'S OFFICE
 - 47 - SURVEYOR'S OFFICE
 - 48 - SURVEYOR'S OFFICE
 - 49 - SURVEYOR'S OFFICE
 - 50 - SURVEYOR'S OFFICE
 - 51 - SURVEYOR'S OFFICE
 - 52 - SURVEYOR'S OFFICE
 - 53 - SURVEYOR'S OFFICE
 - 54 - SURVEYOR'S OFFICE
 - 55 - SURVEYOR'S OFFICE
 - 56 - SURVEYOR'S OFFICE
 - 57 - SURVEYOR'S OFFICE
 - 58 - SURVEYOR'S OFFICE
 - 59 - SURVEYOR'S OFFICE
 - 60 - SURVEYOR'S OFFICE
 - 61 - SURVEYOR'S OFFICE
 - 62 - SURVEYOR'S OFFICE
 - 63 - SURVEYOR'S OFFICE
 - 64 - SURVEYOR'S OFFICE
 - 65 - SURVEYOR'S OFFICE
 - 66 - SURVEYOR'S OFFICE
 - 67 - SURVEYOR'S OFFICE
 - 68 - SURVEYOR'S OFFICE
 - 69 - SURVEYOR'S OFFICE
 - 70 - SURVEYOR'S OFFICE
 - 71 - SURVEYOR'S OFFICE
 - 72 - SURVEYOR'S OFFICE
 - 73 - SURVEYOR'S OFFICE
 - 74 - SURVEYOR'S OFFICE
 - 75 - SURVEYOR'S OFFICE
 - 76 - SURVEYOR'S OFFICE
 - 77 - SURVEYOR'S OFFICE
 - 78 - SURVEYOR'S OFFICE
 - 79 - SURVEYOR'S OFFICE
 - 80 - SURVEYOR'S OFFICE
 - 81 - SURVEYOR'S OFFICE
 - 82 - SURVEYOR'S OFFICE
 - 83 - SURVEYOR'S OFFICE
 - 84 - SURVEYOR'S OFFICE
 - 85 - SURVEYOR'S OFFICE
 - 86 - SURVEYOR'S OFFICE
 - 87 - SURVEYOR'S OFFICE
 - 88 - SURVEYOR'S OFFICE
 - 89 - SURVEYOR'S OFFICE
 - 90 - SURVEYOR'S OFFICE
 - 91 - SURVEYOR'S OFFICE
 - 92 - SURVEYOR'S OFFICE
 - 93 - SURVEYOR'S OFFICE
 - 94 - SURVEYOR'S OFFICE
 - 95 - SURVEYOR'S OFFICE
 - 96 - SURVEYOR'S OFFICE
 - 97 - SURVEYOR'S OFFICE
 - 98 - SURVEYOR'S OFFICE
 - 99 - SURVEYOR'S OFFICE
 - 100 - SURVEYOR'S OFFICE

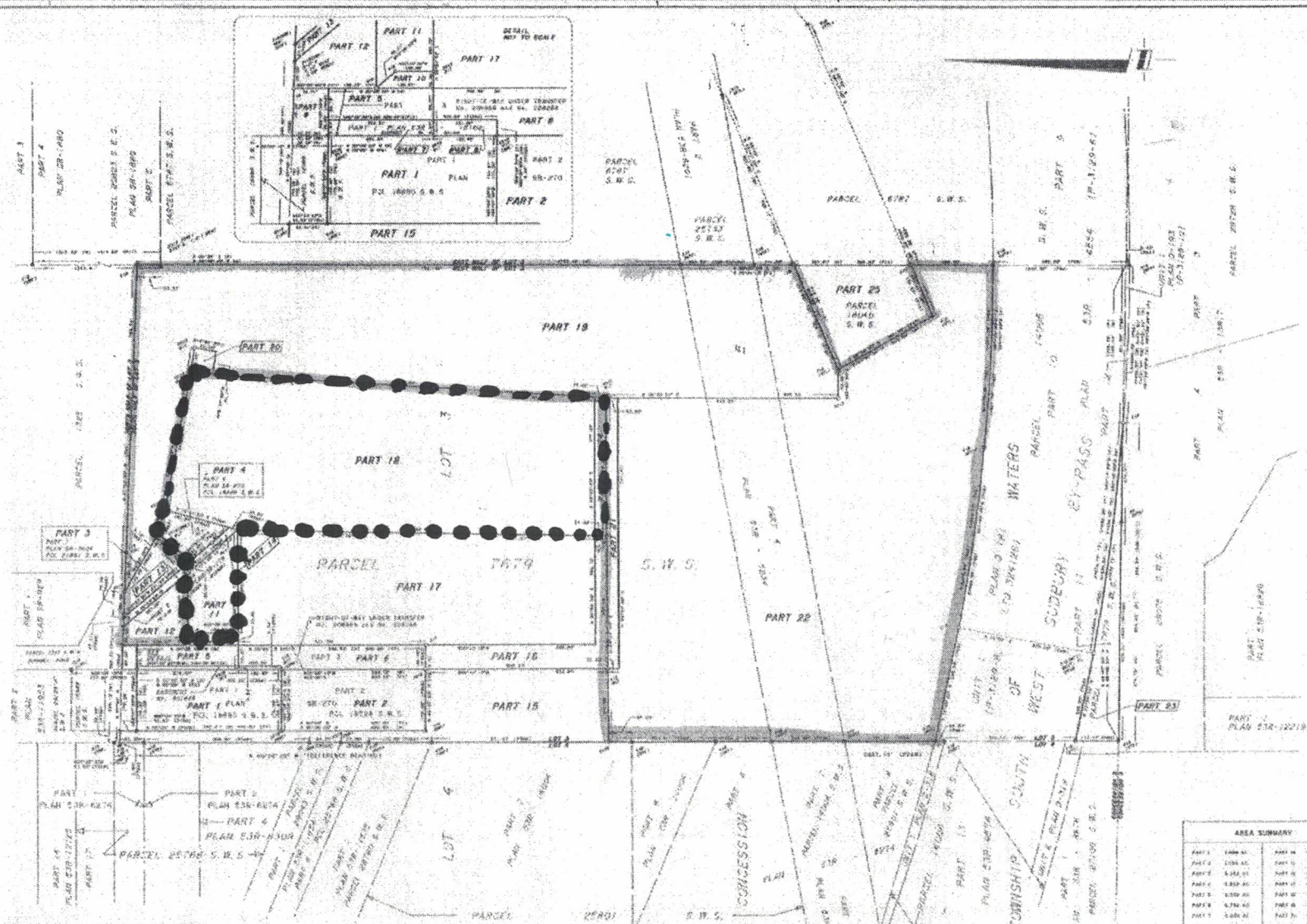
SURVEYOR'S CERTIFICATE
 I, the undersigned, being a duly qualified and licensed
 Surveyor in and for the Province of Ontario, do hereby
 certify that the foregoing is a true and correct copy
 of the original plan as filed in my office, and that
 the same has been examined by me and found to be
 correct in accordance with the provisions of the
 Survey Act, R.S.O. 1990, Chapter S.5, and the
 Regulations thereunder.

[Signature]
 D. S. DORLAND LIMITED
 ONTARIO LAND SURVEYORS

AREA SUMMARY

PART 1	1.000 AC.	PART 16	0.000 AC.
PART 2	1.000 AC.	PART 17	0.000 AC.
PART 3	1.000 AC.	PART 18	0.000 AC.
PART 4	1.000 AC.	PART 19	0.000 AC.
PART 5	1.000 AC.	PART 20	0.000 AC.
PART 6	1.000 AC.	PART 21	0.000 AC.
PART 7	1.000 AC.	PART 22	0.000 AC.
PART 8	1.000 AC.	PART 23	0.000 AC.
PART 9	1.000 AC.	PART 24	0.000 AC.
PART 10	1.000 AC.	PART 25	0.000 AC.
PART 11	1.000 AC.	PART 26	0.000 AC.
PART 12	1.000 AC.	PART 27	0.000 AC.
PART 13	1.000 AC.	PART 28	0.000 AC.
PART 14	1.000 AC.	PART 29	0.000 AC.
PART 15	1.000 AC.	PART 30	0.000 AC.

CAUTION
 THIS PLAN IS NOT A PLAN OF CONVEYANCE
 WITHOUT THE MEANING OF THE CONVEYANCE ACT



D. S. DORLAND LIMITED
 REGIONAL LAND SURVEYORS
 1000 SHEPPARD AVENUE EAST
 SUITE 100
 AURORA, ONTARIO M1T 2X9
 TEL: (416) 709-1111
 FAX: (416) 709-1112